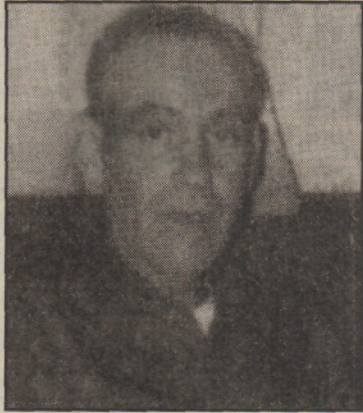


7-10-2003 B.F.H

## Ralph Gordon MacDonald, 68



Ralph Gordon MacDonald was born July 30, 1935 in Bonners Ferry, Idaho to D.J. (Jim) and Amelia (Millie) MacDonald and passed away at the KMC Hospital in Coeur d'Alene, Idaho on Monday evening, June 30, 2003 of congestive heart failure.

Ralph was the ninth child of a family of 11 children. Most of his nearly 68 years were spent somewhere in Idaho. His present home was in Rathdrum.

He attended school in Bonners Ferry, the first eight years at the Northside School and quit high school to join the Army, spending part of his Army career in Germany.

Upon his discharge from the Army, he returned to Idaho. Working at different jobs, he liked driving grain trucks, logging trucks and any heavy equipment.

He eventually married Linda Gaylord Kelson and adopted her two sons, Raymond and Kelly. To that

family were born four more, a son Donald and three daughters, Wendy, Debbie and Jaimie.

They were later divorced and Ralph married Donna Hatch, who had four children, a son Roy, and three daughters, Rene, Rhona and Denise.

Ralph loved rodeos, having participated in many. In the first Kootenai River Days Rodeos, he amused many an audience with his riding and antics performed following his being thrown from the bronc or bull.

He was a happy person and could always tell you a great story, if you took the time to listen. He will be missed.

He is survived by his wife Donna; six children, Raymond, Kelly, Wendy, Debby and Jaimie; four step-children, Roy, Rene, Rhona and Denise; his four brothers, Allan and wife Mildred; Jim; Dam and wife Karlene; and Ken and wife Karen, all of Bonners Ferry; five sisters, Doris and husband Lester Howard of Bonners Ferry; Donalda (Donnie) and husband Myrel Howard of Richmond, Va.; Annie Ritz of Wenatchee, Wash.; Jessie and husband Paul Schlener of Moses Lake, Wash.; and Ruthie and husband Larry Hoglan of Bonners Ferry, Id.

He was preceded in death by his parents and his brother, Bill. There will be no services by Ralph's request.